



Khed Taluka Shikshan Prasarak Mandal's

Sahebraoji Buttepatil Mahavidyalaya Rajgurunagar

Tal- Khed, Dist- Pune, Maharashtra - 410505

*(Affiliated to Savitribai Phule Pune University,
Recognized by Govt. Of Maharashtra)*

Criterion 7 – Institutional Values and Best Practices

Key Indicator 7.1 Institutional Values and Social Responsibilities

7.1.1 Institution has initiated the Gender Audit and measures for the promotion of gender equity during the last five years.

Gender equity




PRINCIPAL
K.T.S.P. Mandal's
Sahebraoji Buttepatil Mahavidyalaya
Rajgurunagar, Tal. Khed, Dist. Pune.

Khed Taluka Shikshan Prasarak Mandal's

SAHEBRAOJI BUTTEPATIL MAHAVIDYALAYA

Rajgurunagar, Tal. Khed, Dist - Pune 410505



GENDER EQUITY



PRINCIPAL

K.T.S.P. Mandal's

Sahebraoji Buttepatil Mahavidyalaya

Rajgurunagar, Tal. Khed, Dist. Pune.

GENDER EQUITY

The institution has always given priority to give attention on gender equity in curricular as well as co-curricular activities. Focus has been also given to arrange various events in the campus regarding safety issues. Our institute is always giving the literacy learning in such way to enhance the confidence of girl's students and helps them to transform their lives towards good one.

Institute established various committees for women as enlisted below,

- 1) Anti Ragging Committee
- 2) Student Complain resolving Committees
- 3) Women's Grievance Redressal cell.
- 4) Girls Welfare and Health committee
- 5) Women Anti abuse committee

1. Women sexual Harassment prevention cell of our college addresses the problems regarding girl's harassments or molestation if any.
2. In the entrance of college complain box is fitted to collect any complaints or suggestions from the girl's students or ladies' staff. Institution has active Grievance Redressal Cell to monitor & took actions related to safety, security and any other related issues.
3. Modern electronic gadgets like CCTV cameras are installed in the college premises in order to provide 24 hrs surveillance to prevent any inappropriate incident.
4. Fire Extinguishers are made available at the appropriate locations.
5. The institution organizes blood and Haemoglobin checking camp every year. The students having serious issues are addressed to



PRINCIPAL
K.T.S.P. Mandal's

Sahabraoji Buttepatil Mahavidyalaya
Rajgurunagar, Tal. Khed, Dist. Pune.

hospitals comprising parents too. In case of emergency, the nearby hospital contact numbers are provided in the college.

6. Ladies security guard is provided in the college for maintaining a safe and supportive learning environment for girl student.
7. Comprising of female faculty members is constituted as per the university guidelines and is working effectively. Anti-ragging committee take in stake of ragging incidents if any regularly.
8. Safety committees like anti sexual harassment committee women.
9. Institution has women's grievance redressal cell to monitor and take actions related safety, security and any other related issues.
10. The institute also encourages the active participation of girls in cultural and sports activities. Various events and competitions are organized where girls are highly motivated to showcase their talents and skills. The institute takes pride in the high participation of girls in these activities, reflecting their confidence and enthusiasm.
11. The institute also commemorates significant days to celebrate the contributions of women. On the occasion of Women's Day, various activities are organized, including sport day, bhodala celebration, yoga activity. These activities provide a platform for students to reflect on the achievements and struggles of women in society and promote gender-equality.
12. The college a co-education institute and sensitive towards gender equality of its students and always try to make different facilities available for them. Concerns regarding security and safety are addressed by the college through different means. The college campus is well protected.
13. The college promotes gender equity in all its activities due to this large number of girl students take part in cultural and sports activities. The



PRINCIPAL
K.T.S.P. Mandal's

Sanjivani Mahavidyalaya
Rajgurunagar, Tal. Khed, Dist. Pune.

college celebrates International Yoga day on 21st June every year to make student aware of yoga practices and its importance.

14. The college celebrates Constitutional day on 26th November in which students take oath of national integrity and follow constitution. The college also celebrates Savitribai Phule Jayanti as Balika Din. On this occasion different lectures are arranged for students to make them aware of gender equality and social inclusiveness. The college organizes different events like cultural event, sports event in which students take part and make college atmosphere inclusive towards gender equality. National youth day is celebrated in the college. Nation AIDS day is also celebration in the college.
15. The college organized lecture on guidance on 'Today's gender equality for sustainable Tomorrow' and lows relating to women, quiz on International women day.
16. The college has a well-defined student counselling system. Each student is allotted with a particular faculty member who will be his/her counselor till the end of his/her course. The class teacher and heads of the department perform the role of mentor boy counselling the students. All the teachers of the department take the responsibility of certain class and try to understand the problems of their students and support them the help of counselling. The parents meet are conducted in the college. In their meetings parents are also advised for the personal counselling of their children for understanding their problems in the college.
17. The college has a separate common room for girls. Girls common rooms are equipped through and First Aid Box. The library has a reading room which is utilized by girls. Institute has a sick room having basic health care facilities

Sensitization In Curricular and Co-Curricular Activities

Our institute organized number of activities. Independence Day, Republic Day, Constitutional Day, unity day ,suryanamskarinitiative, Nation voter's day, National consumer day, voter Awareness complain, Har ghar


PRINCIPAL
K.T.S.P. Mandal's

Sahebraoji Buttepatli Mahavidyalaya
Rajgurunagar, Tal. Khod, Dist. Pune.



Tiranga rally, Nasha mukth bharat abhiyaan, are celebrated with great enthusiasm.

Further more, birth anniversary of great Indian personalities are celebrated with great devotion.

Student Grievances Redressal committee/Cell

YEAR 2019 -20

Sr.No	Name	Designation
1.	Dr.S.M.Jagtap	Chairman
2.	Prof.S.J.Pacharne	Member
3.	Prof.U.C.Bhoske	Member
4.	Prof.N.D.Barne	Member
5.	Prof.A.S.Pawar	Member
6.	Prof.A.A.Indais	Member
7.	Prof.P.S.Gaiwad	Member

Student Grievances Redressal committee/Cell

YEAR 2020 - 21

Sr.No	Name	Designation
1.	Dr.H.M. Jare	Chairman
2.	Dr.S.M.Jagtap	Member
3.	Prof.S.J.Pacharne	Member
4.	Prof.U.C.Bhoske	Member
5.	Prof.N.D.Barne	Member
6.	Prof.T.B.Vehale	Member
7.	Prof.A.A.Indais	Member
8.	Prof.K.D.Gokule	Member




PRINCIPAL
K.T.S.P. Mandal's
Sahebraoji Buttepatil Mahavidyalaya
Rajgurunagar, Tal. Khod, Dist. Puno.

Student Complain resolving Committees
YEAR 2021-22

Sr. No	Name	Designation
1.	Dr.H.M. Jare	Chairman
2.	Dr.S.M.Jagtap	Member
3.	Prof.S.J.Pacharne	Member

Student Complain resolving Committees
YEAR 2022-23

Sr.No	Name	Designation
1.	Dr.H.M. Jare	Chairman
2.	Dr.S.M.Jagtap	Member
3.	Prof.S.J.Pacharne	Member

Anti-Ragging Committee
Year – 2018-19

Sr.No	Name	Designation
1.	Prof.Barne .N .D.	Chairman
2.	Prof.Modhane G. P.	Member
3.	Prof.Bhosake U. V.	Member
4.	Prof.Chaudhari.G.V	Member
5.	Prof.Ghodake. R. G .	Member
6.	Prof.Shah.N.S.	Member



PRINCIPAL
K.T.S.P. Mandal's

Sahebraoji Buttepatil Mahavidyalaya
Rajgurunagar, Tal.Khod, Dist.Pune.



Girls Welfare and Health committee

Year-2022-23

Sr. No	Name	Designation
1.	Prof.A.A.Indais	Chairman
2.	DR.S.M.Jagtap	Member
3.	Prof.M.P.Kolhe	Member
4.	Prof.D.R.Borhade	Member
5.	Prof.S.S.Deshmukh	Member
6.	Prof.P.N.Gadale	Member
7.	Prof.A.H.Inamdar	Member
8	PROF.L.B.KATHE	Member
9	MRS .S.P.Badhe	Member
10	MRS.M.A.Mali	Lab Assistant
11	MRS.S.M.Mali	Lab Attendant

ANTI-RAGGING COMMITTEE

Year 2022-23

Sr.No.	Name	Designation
1.	Prof.A.A.Indais	chairman
2.	Dr.S.M. Jagtap	Member
3.	Prof.U.C.Bhoske	Member
4.	Prof.S.J. Pacharne	Member
5.	Prof.A.J.Bendale	Member
6.	Prof.T.B.Vehale	Member
7.	Prof.K.A.Bedale	Member
8.	Prof.S.L.Burud	Member
9.	Prof.G.G.Aherkar	Member
10.	Prof.P.N.Gadade	Member
11.	Prof.A.H.Inamdar	Member



PRINCIPAL
K.T.S.P. Mandal's

Sahabraoji Buttepati Mahavidyalaya
Rajgurunagar, Tal. Khod, Dist. Pune.

Women Anti- Abuse committee
Year-2022-23

Sr.No.	Name	Designation
1.	Prof.K.A.Bedale	Chairman
2.	Prof.S.M.Jagtap	Member
3.	Prof.M.P.Kolhe	Member
4.	Prof.A.A.Indais	Member
5.	Prof.S.S.Deshmukh	Member
6.	Prof.P.N.Gadade	Member
7.	Prof.A.H.Inamdar	Member
8.	Prof.L.B.Kathe	Member



PRINCIPAL
K.T.S.P. Mandal's
Sahebraoji Buttepatil Mahavidyalaya
Rajgurunagar, Tal. Khod, Dist. Pune.

Glimpse Of Facilities




PRINCIPAL
K.T.S.P. Mandal's
Sahebraoji Buttepatil Mahavidyalaya
Rajgurunagar, Tal. Khed, Dist. Pune.



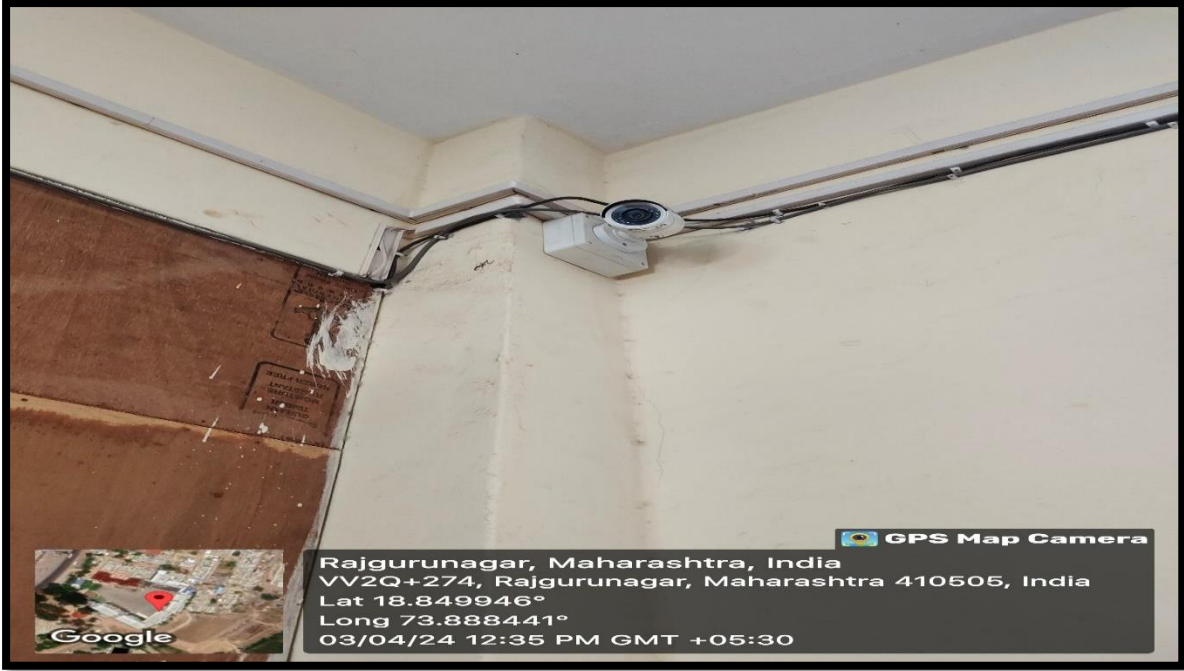
Complain Box



Main Gate CCTV

[Handwritten Signature]
PRINCIPAL

K.T.S.P. Mandal's
 Sahebraoji Buttepatil Mahavidyalaya
 Rajgurunagar, Tal.Khed, Dist.Pune.



Classroom CCTV



Ladies security Guard


PRINCIPAL
 K.T.S.P. Mandal's

Sahabraoji Buttepatil Mahavidyalaya
 Rajgurunagar, Tal. Khed, Dist. Pune.



Ladies Toilet




PRINCIPAL
K.T.S.P. Mandal's
Sahebraoji Buttepatil Mahavidyalaya
Rajgurunagar, Tal. Khed, Dist. Pune.